

120-Degree Connector

Product Features

Kichler's TE Series of tape light extruded channels can be mitered into desired sizes or angles, then reconnected into unique configurations utilizing a connector accessory or bracket. This 120-degree connector joins channels with pre-trimmed ends at their top or bottom to form a 120-degree angle.

View [120-Degree Connector](#)

Product Specification

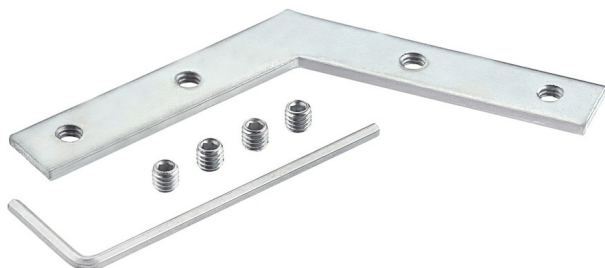
Width : 0.50

Height : 2.00

Style : Contemporary

Vendor Name : Kichler

Family : IIs Te Series



Scan to Visit

